



## Pergola Kits

---

### What's Included:

- 8" x 8" Vinyl Posts
  - 2" x 6" Headers with Aluminum Inserts
  - 2" x 6" Rafters with Aluminum Inserts
  - 1.5" x 1.5" Shade Tubing
  - Aluminum Mounts
  - All Fastening Hardware Except Concrete / Wood Bolts
  - Aluminum Post Insert
  - Column Mount Assembly
  - Vinyl Trim Kits
- These directions are only a guide and may not address every situation.
  - Always wear proper safety equipment while assembling and installing.
  - The installer should obtain all required building permits and follow all installation procedures in accordance with applicable building code requirements.
  - Eastern Wholesale Fence LLC shall not be liable for improper or unsafe installations.
  - Applying paint will void your material warranty.

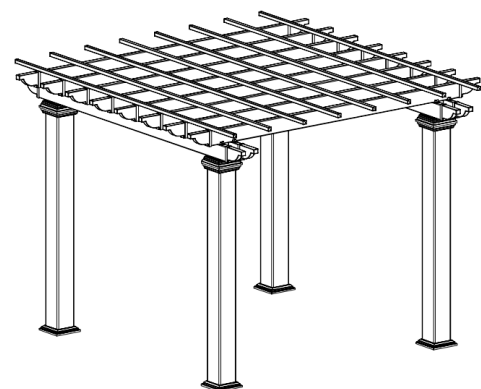
---

**1-800-339-3362 • [www.IllusionsFence.com](http://www.IllusionsFence.com)**

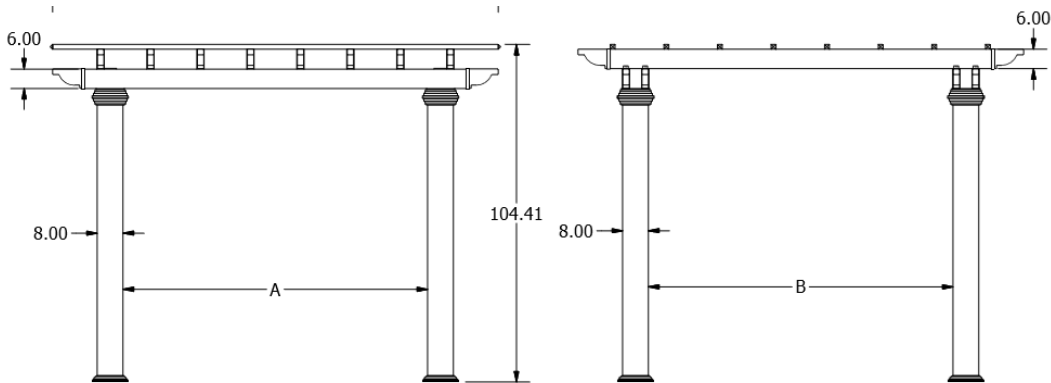
# Illusions® Instructions for Pergola Installation

1

Using the measurements provided depending on the size pergola you have, mark an outline for the columns.

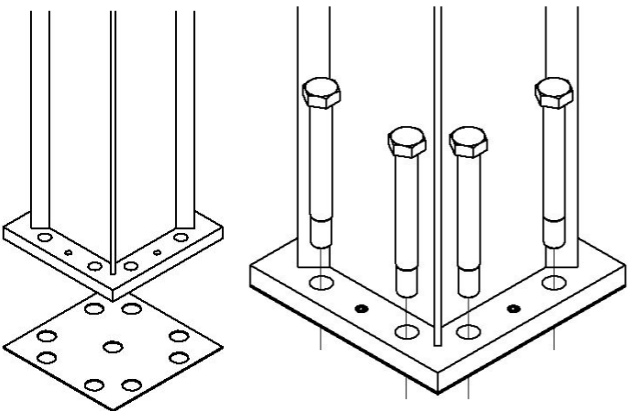


A		B	
Model	INCHES	Model	INCHES
8' x 8'	70.00	8' x 8'	70.00
8' x 10'	94.50	8' x 10'	70.00
8' x 12'	118.75	8' x 12'	70.00
10' x 10'	94.50	10' x 10'	94.50
10' x 12'	118.75	10' x 12'	94.50
12' x 12'	118.75	12' x 12'	118.75



2

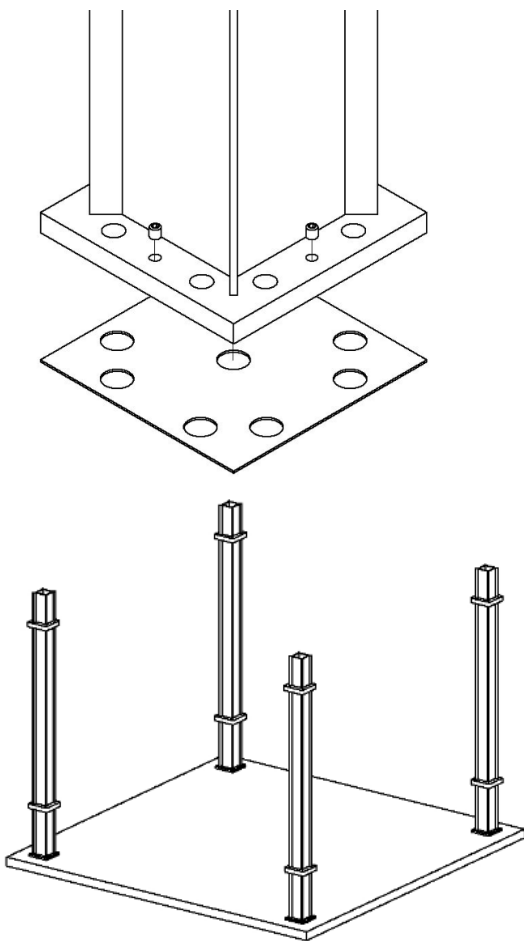
Solid Surface Mount –Set Leveling Plate and Column Mount in position.  
Mark the hole locations and drill holes into concrete.



Alt 2. Direct Burial Mount - Do not use the Column Mount or Leveling Plate, continue to part 5.

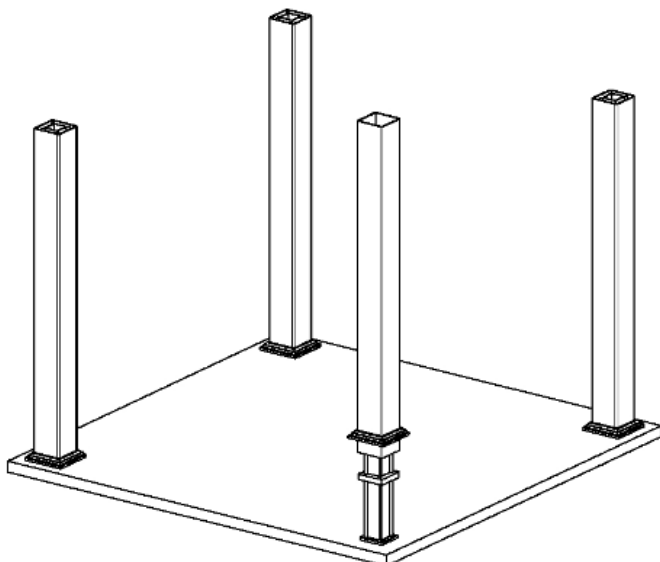
3

Using a level, make sure the column mount is plumb using adjustment screws.



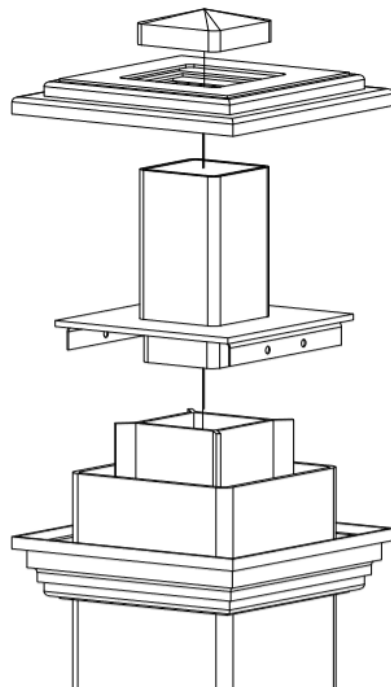
4

Place 8" x 8" vinyl post over the Column Mount.



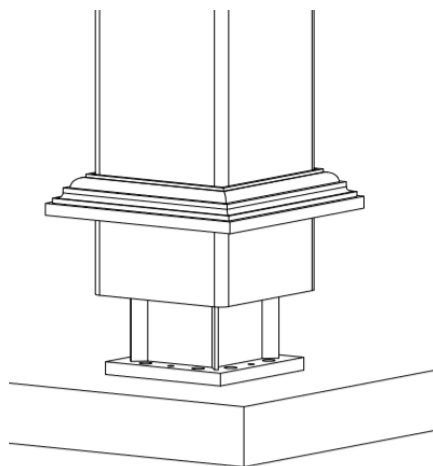
5

Place Column Mount Assembly and Post Cap onto the top 8" Vinyl Post.



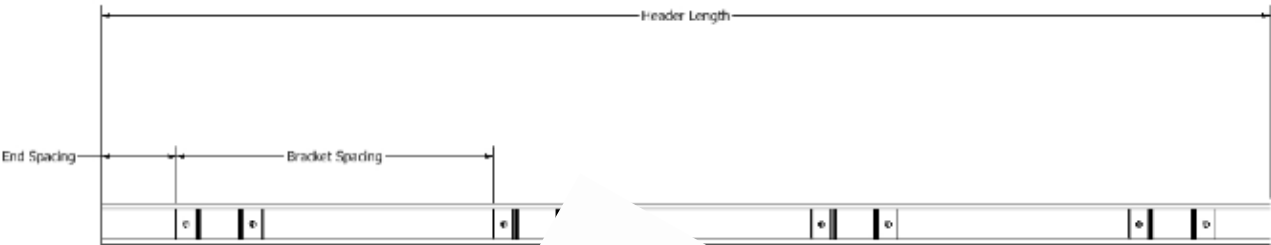
6

Place the Post Skirt onto the bottom of the 8" Vinyl Post.

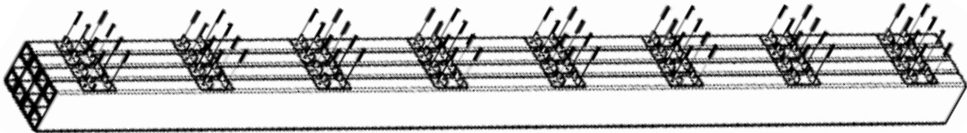


7

Mark the Headers using the chart provided below for the Rafter Brackets. Draw a line across all corresponding Headers for uniformity. Space out brackets equally.

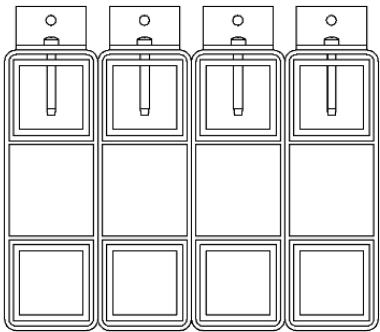


Beam Length	Bracket Spacing	End Spacing	Rafters Required
8'	14"	3 7/8"	7
10'	15 1/2"	3 5/8"	8
12'	14 3/4"	3 1/2"	10
16'	15"	3 7/8"	13
20'	15 1/4"	3 1/2"	16
24'	15 1/4"	4 5/8"	19



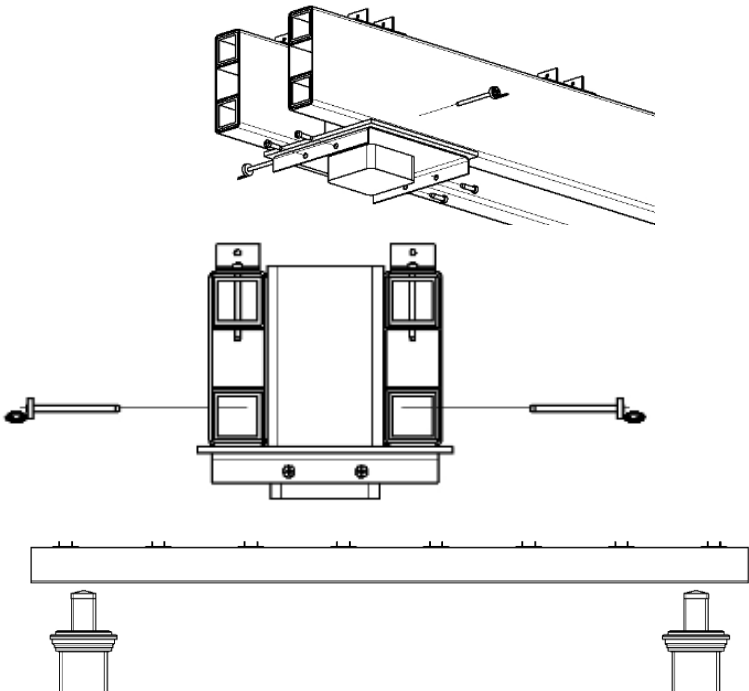
8

Attach Rafter Brackets with 1" screws provided to the header making sure to go through the aluminum insert for strength.



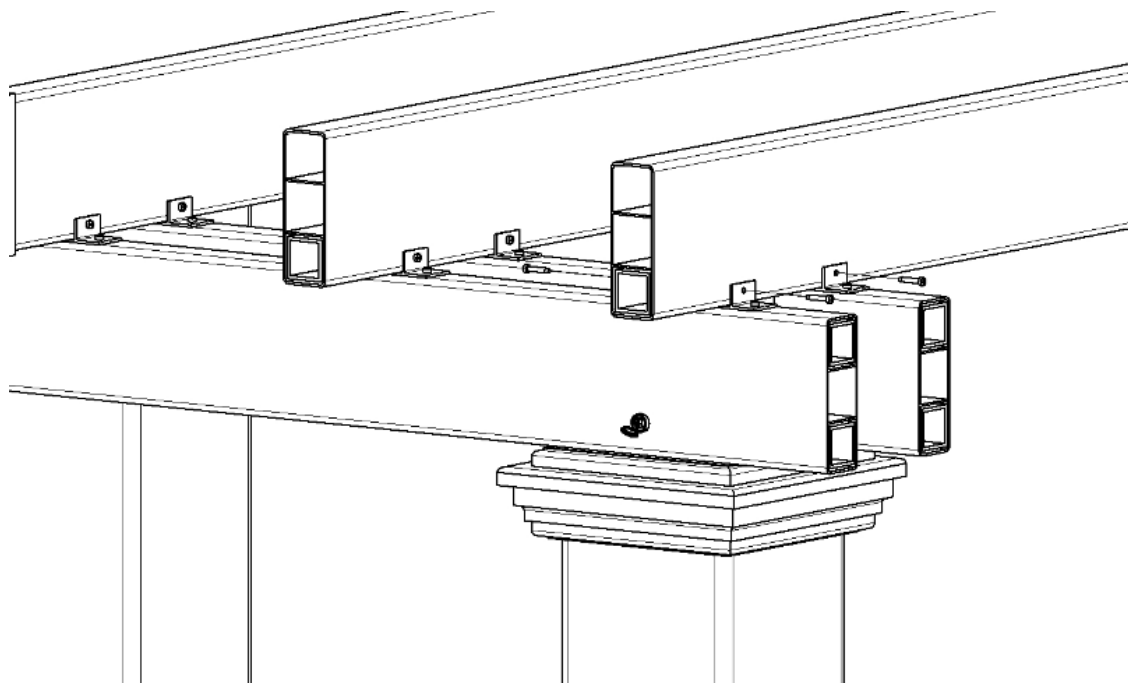
9

Attach the Headers to the Post Mount Bracket with the 3" screws and screw caps provided. Equal spacing in between Post Mounts.



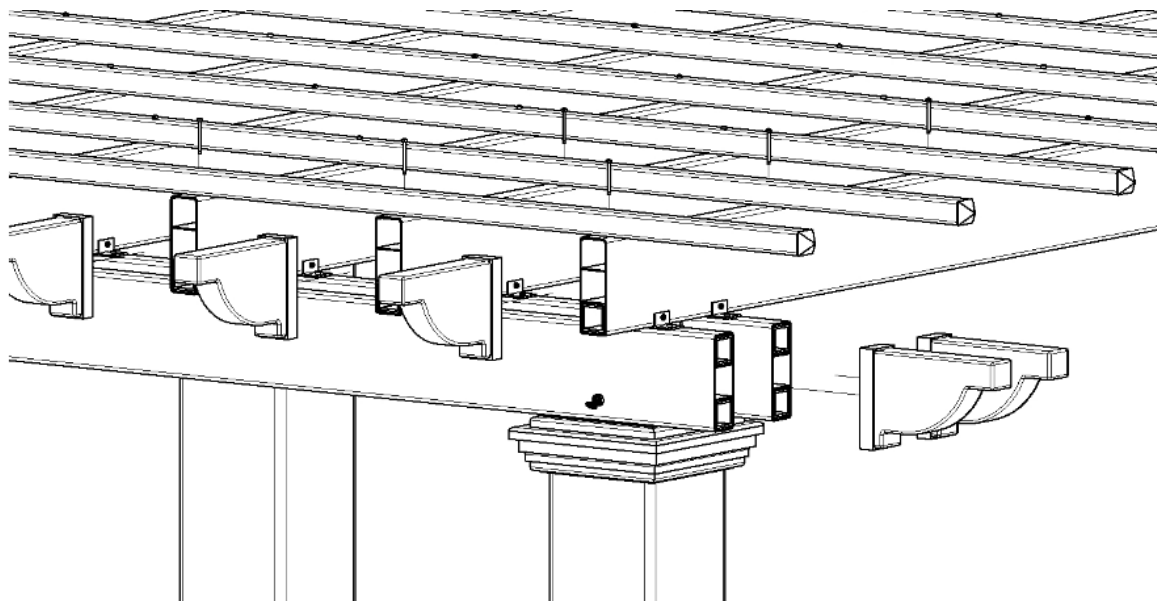
10

Attach Rafters to Headers to the Brackets using the 1" screws provided.



11

Attach the Vinyl Shade Tubing (1.5" x 1.5") with the 2" screws provided.



12

Place glue on the inside of the Pergola End Caps before installing on to the ends of the Headers and Rafters.